



Bishops Drive, East Harnham - SP2 8NZ

Guide Price £725,000

# Bishops Drive

East Harnham, Salisbury

This beautifully presented detached four-bedroom family home offers an impressive blend of classic charm and contemporary comfort. The spacious layout is thoughtfully designed, featuring two generous reception rooms that cater to both relaxation and entertaining. The inviting living areas are enhanced by features such as decorative ceiling moulding, ornate ceiling roses, and elegant bay windows, all of which are bathed in natural light. The living room boasts a cosy wood burning stove, creating a warm, homely atmosphere perfect for family gatherings. A bright dining room, with striking French doors and a bay window, seamlessly connects to the outdoor seating area, offering an ideal setting for formal dinners or casual entertaining with views over Salisbury. Upstairs, the bedrooms are generously sized, each benefitting from built-in wardrobes, soft neutral decor, and large windows that frame picturesque garden views. The spacious landing with a skylight and chandelier further enhances the sense of light and space throughout the home.

The property's bathrooms are finished to a high standard, featuring sleek walk-in showers, heated towel rails, stylish mosaic tile accents, and modern vanities with ample integrated storage. The heart of the home is the well-appointed kitchen, which impresses with classic wooden cabinetry, integrated appliances, a practical breakfast bar, and abundant natural light - perfect for both every-day living and culinary entertaining. Outside, the property excels with its kerb appeal, showcasing a meticulously landscaped front garden, mature trees, and vibrant flower beds. The generous double garage and ample driveway provide substantial off-

- Landscaped garden
- Double garage
- Off-road parking



# 19 Bishops Drive

East Harnham, Salisbury

road parking. The rear garden is equally impressive, offering a spacious lawn, well-maintained borders, mature trees, and a private patio area ideal for alfresco dining and outdoor relaxation. A charming balcony provides stunning views over the landscaped garden and beyond, creating a tranquil retreat. Additional features such as an outdoor shed and period Tudor-style architecture with ivy-clad brickwork add character and practicality. This exceptional home combines refined interiors with extensive, beautifully maintained outdoor spaces, making it perfect for families seeking comfort, elegance, and a superb indoor-outdoor lifestyle.

- Landscaped garden
- Double garage
- Off-road parking
- Modern kitchen with integrated appliances
- Breakfast bar
- French doors with garden access
- Spacious layout
- Wood burning stove
- Walk-in shower
- Balcony with stunning views





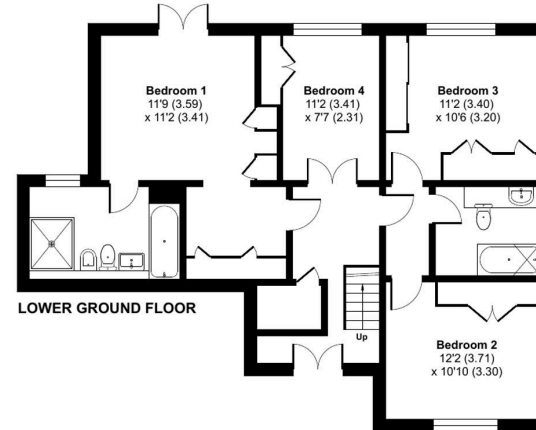
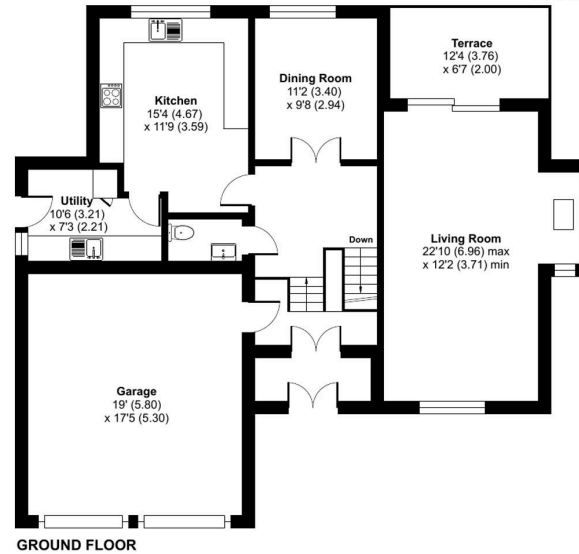




# Bishops Drive, East Harnham, Salisbury, SP2

Approximate Area = 1783 sq ft / 165.6 sq m  
Garage = 322 sq ft / 29.9 sq m  
Total = 2105 sq ft / 195.5 sq m

For identification only - Not to scale



 Floor plan produced in accordance with RICS Property Measurement 2nd Edition, incorporating International Property Measurement Standards (IPMS2 Residential). ©nichecom 2026. Produced for Carter May LTD. REF: 1468863

## Carter & May

Head Office: 41 Castle Street, Salisbury - SP1 3SP

01722 331 993 | 01425 541575 | 01980 669751 • [info@cartermay.co.uk](mailto:info@cartermay.co.uk) • [www.cartermay.co.uk/](http://www.cartermay.co.uk/)

